

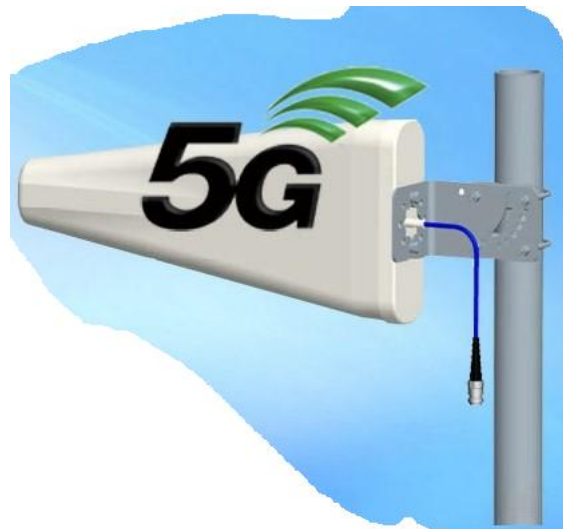


JIETONG DIGITAL

GET CONNECTED

5G Logarithmic Periodic Directional Antenna

Model: JTD-LPD-0660DSF-M



Specifications:

- Freq.Range(MHz): 617-960/1695-2700/3300-4200/4800-6000MHz
- Polarization: **Vertical**
- Gain (dBi): **7.5/9/9/8**
- Ver. Beamwidth(°): **65/60/55/50**
- Hor. Beamwidth(°): **100±15/85±15/80±15/70±15**
- Intermodulation IM3 (2×43dBm carrier): **-153dBc / -153dBc / -153dBc / NA**
- VSWR: **≤1.8**
- F/B Ratio: **15/20/18/18**
- Connector: **N Female or 4.3-10 Female**
- Dimension(mm): **442*210*65**