

# 690~960/1710~2170/2500~2700/3300~3800MHz

## Multi Band Car Antenna W/ Magnetic Mount Omni Antenna



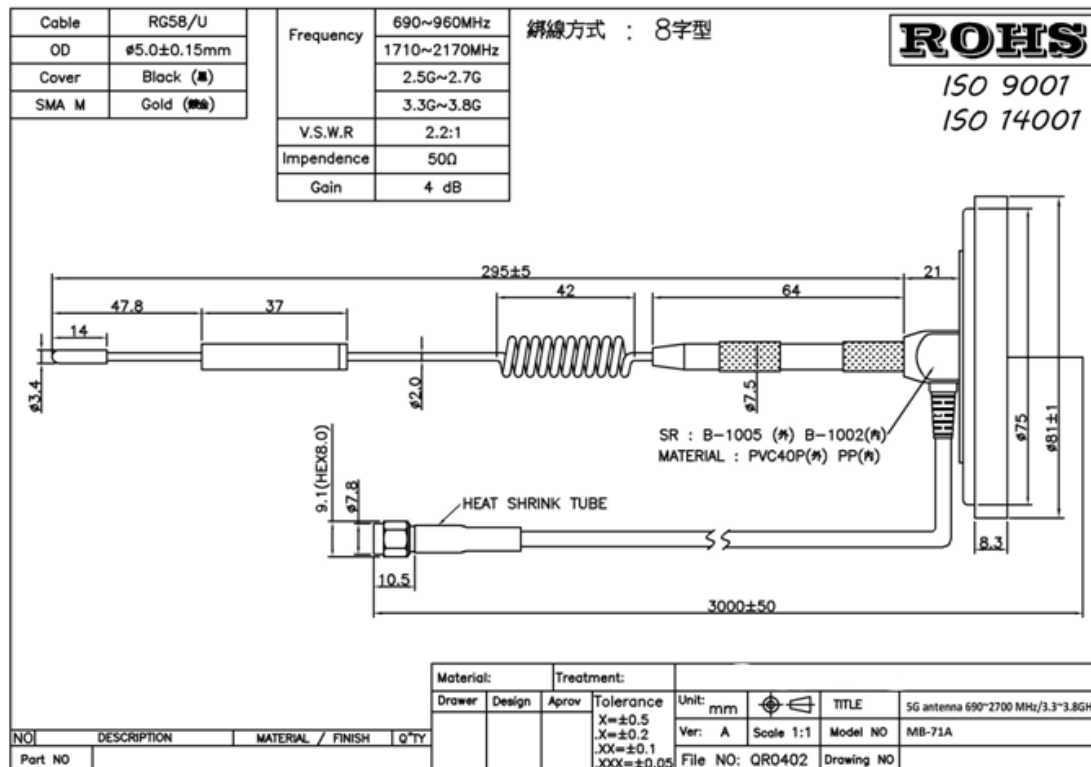
Telecommunication Technology & Engineering Accessories

Rev.V1.0

Model: TS-MB-71A

Item		Schematic Diagram
Frequency Range	690-960/1710~2170/2500~2700/3300~3800MHz	
V.S.W.R	< 2.5	
Impedance	50Ω	
Type of Radiation	Omni-directional	
Polarization	Vertical	
Gain	5-6 dBi	
Cable	RG58 or RG195/U low loss cable - 3 Meters (customized length)	
Connector	SMA Male or others (optional)	
Operating Temperature Range	-30°C to + 70°C	

### Product Drawing :



All specifications are subject to change without notice.

©2019 TONE SPREAD TECHNOLOGY CO.,LTD. All Rights Reserved.

Website <http://www.tspd.com.tw>

ADD: 11169 2F, No 141, Fu-Gang St. Taipei, Taiwan

TEL: +886-2-2882-8979

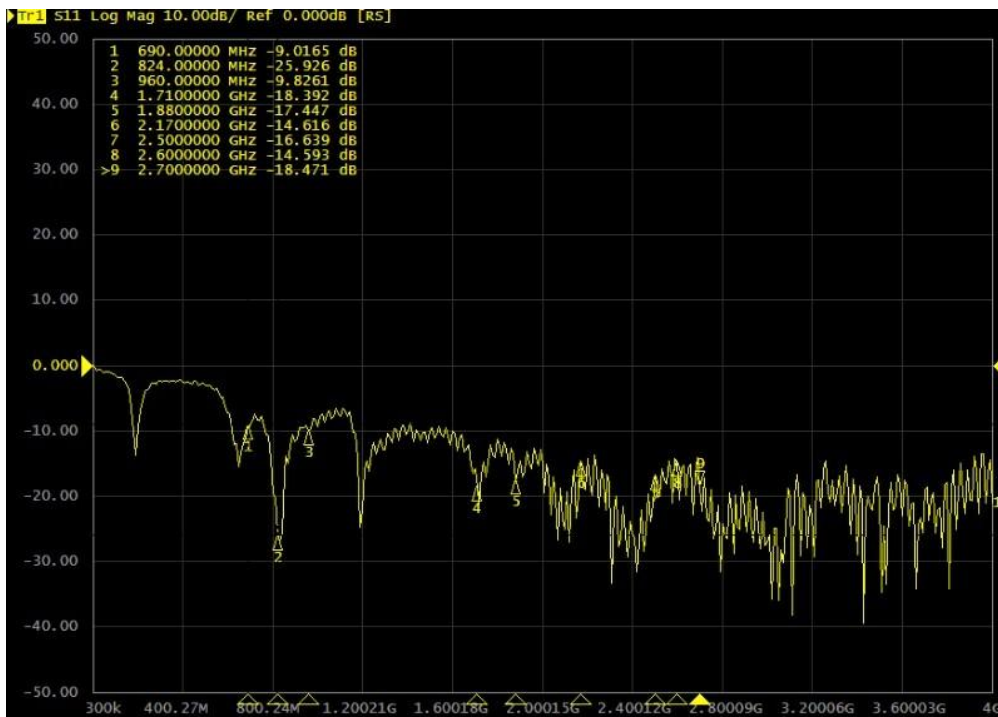
FAX: +886-2-2882-9196

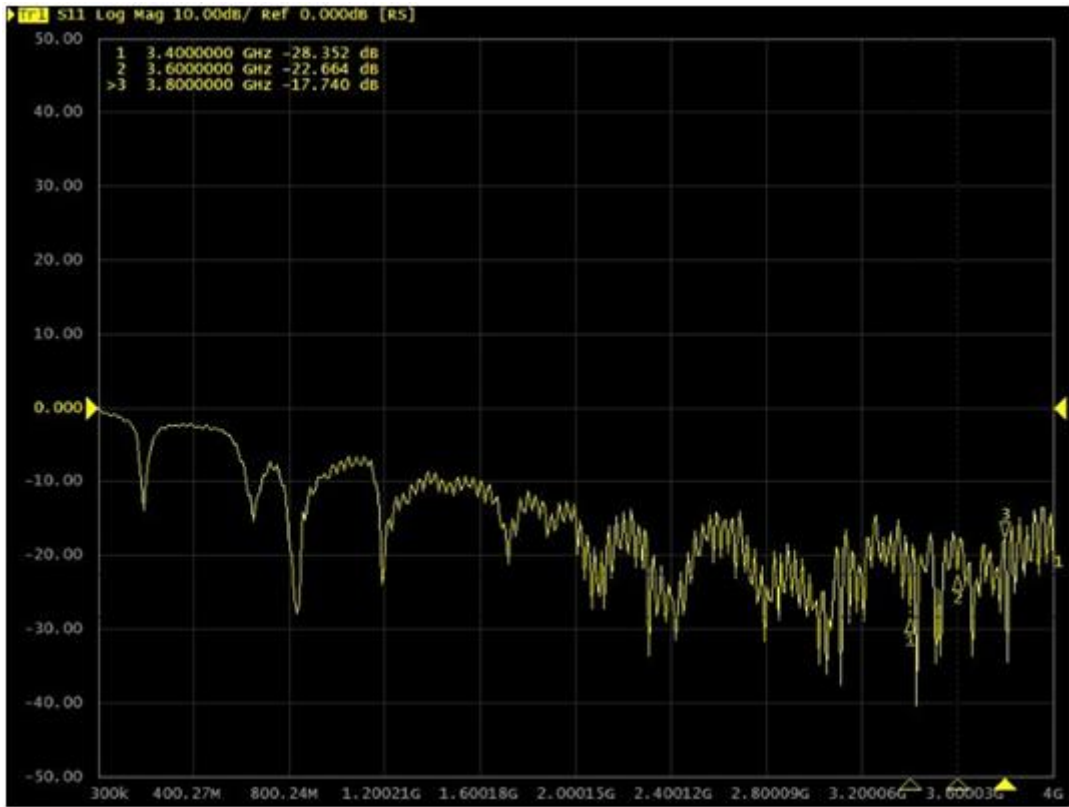
E-mail: [sales@tspd.com.tw](mailto:sales@tspd.com.tw)

## Efficiency and Gain

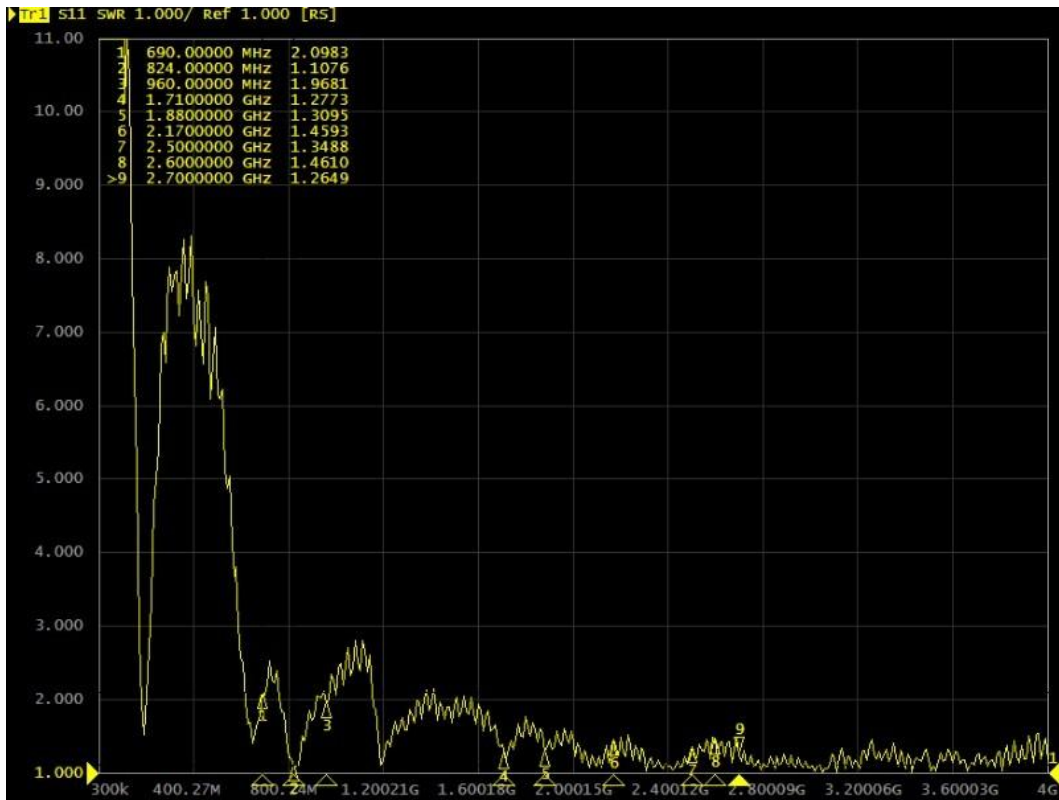
Frequency (MHz)	Return Loss (dB)	VSWR	Efficiency (%)	GAIN (dB)
690	-9.01	2.09	76.56	2.77
824	-25.92	1.10	76.21	2.91
960	-9.82	1.96	59.02	0.95
1710	-18.39	1.27	57.15	3.55
1880	-17.44	1.30	66.37	3.88
2170	-14.61	1.45	56.36	3.76
2500	-16.63	1.34	71.12	6.86
2600	-14.59	1.46	61.8	5.47
2700	-18.47	1.26	80.35	6.39
3400	-28.35	1.08	66.22	5.83
3600	-22.66	1.16	64.42	5.6
3800	-17.74	1.29	49.2	3.52

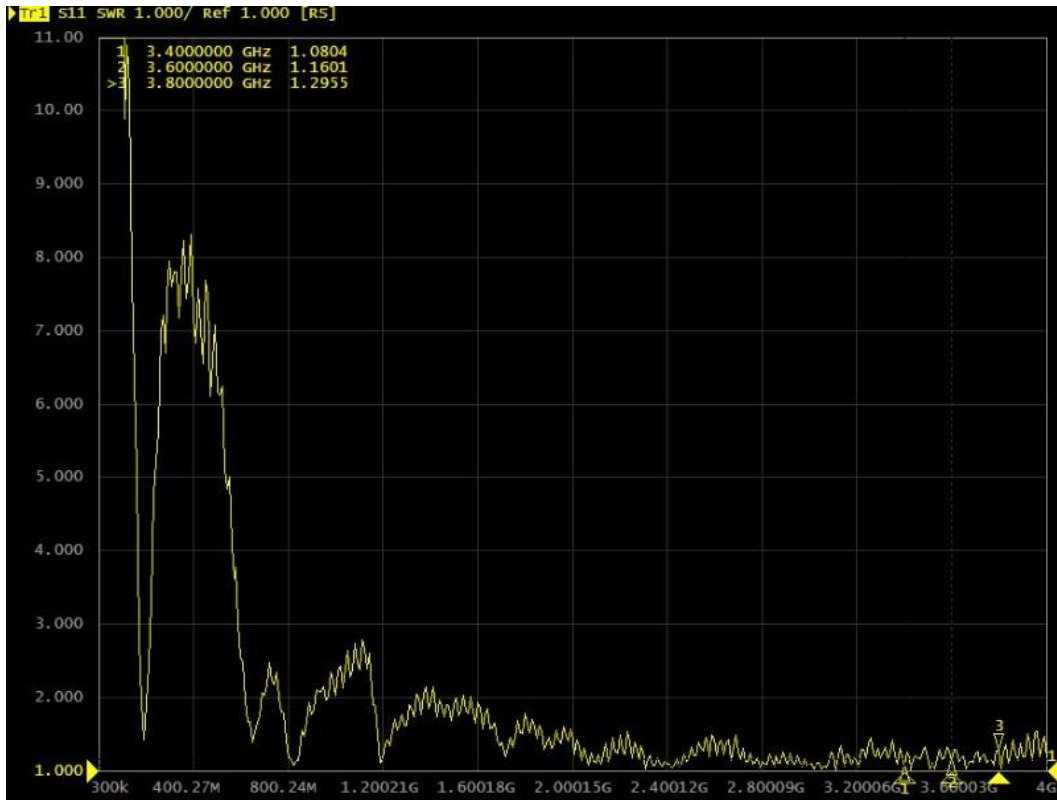
## Return Loss





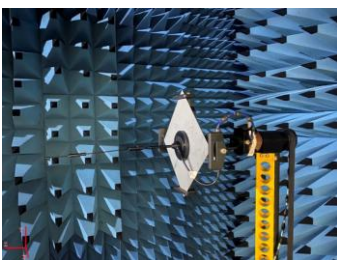
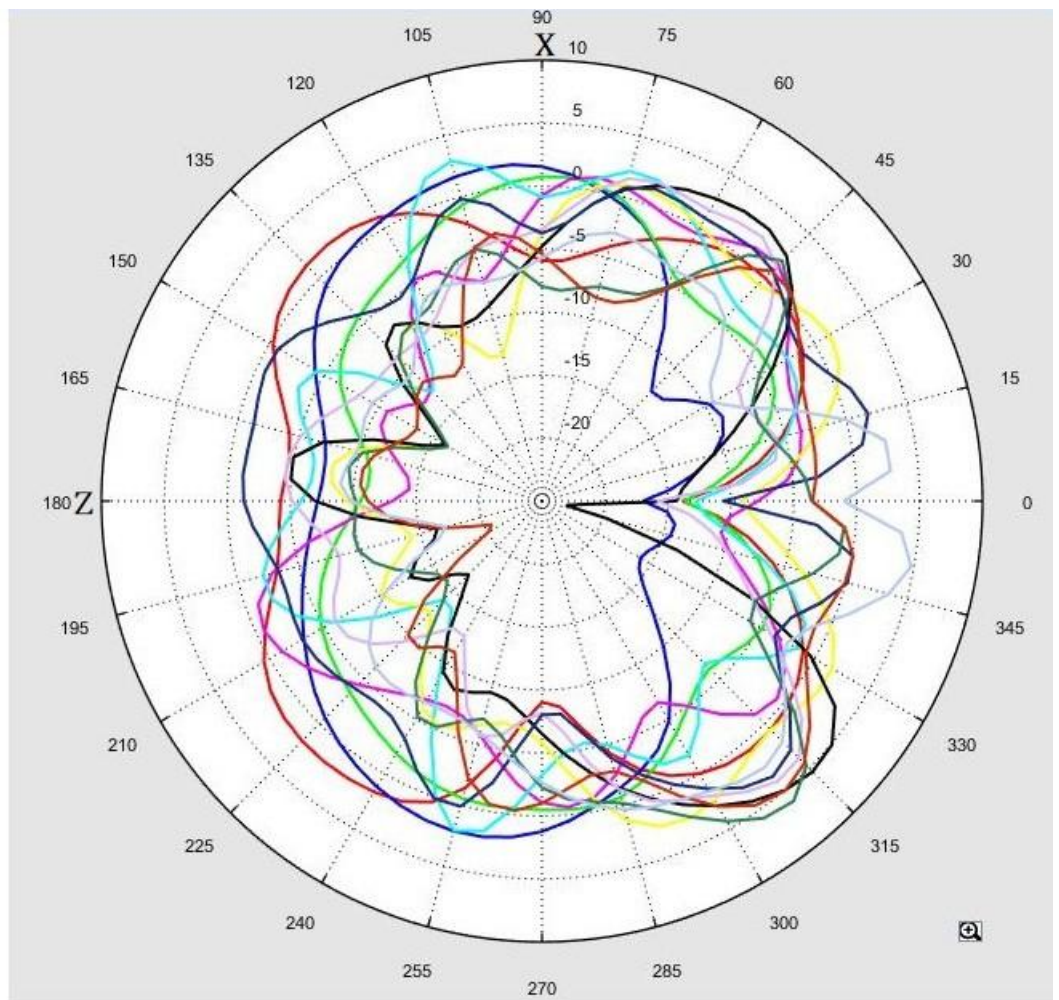
**VSWR**





**PATTERNS**

Freq. / Chan.	Color
690MHz	Red
824MHz	Blue
960MHz	Green
1.71GHz	Magenta
1.88GHz	Cyan
2.17GHz	Yellow
2.5GHz	Black
2.6GHz	Purple
2.7GHz	Dark Blue
3.4GHz	Light Green
3.6GHz	Orange
3.8GHz	Light Blue



All specifications are subject to change without notice.

©2019 TONE SPREAD TECHNOLOGY CO.,LTD. All Rights Reserved.

Website <http://www.tspd.com.tw>

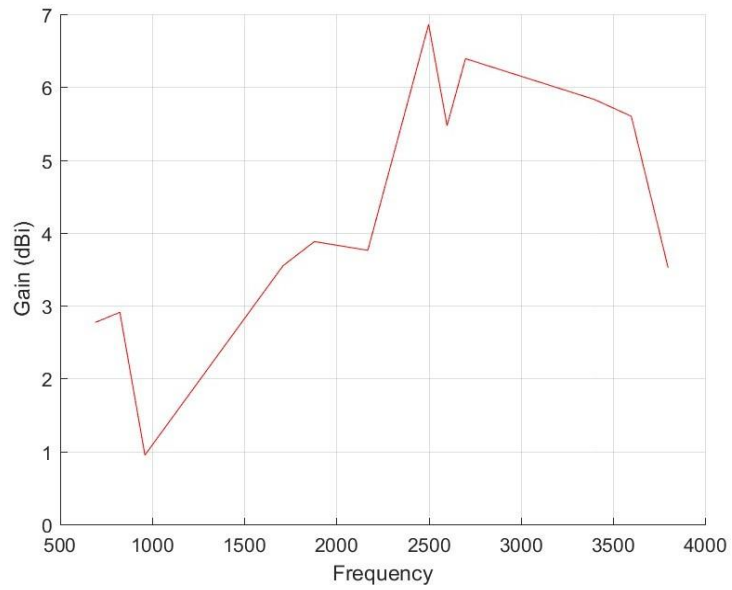
ADD: 11169 2F, No 141, Fu-Gang St. Taipei, Taiwan

TEL: +886-2-2882-8979

FAX: +886-2-2882-9196

E-mail: [sales@tspd.com.tw](mailto:sales@tspd.com.tw)

Total\_Gain (dBi)



Total\_Efficiency (%)

