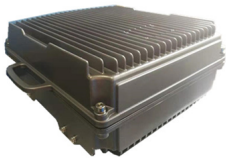


TS-DRP-DW-80-30



TS-DRP-DW-80-30



G(L)1800-75M+W(L)2100-60M-30dBm Dual Band Digital Repeater

??: ????
1-2 months
★ ★ ★ ★ ★

[????????](#)

??

MODEL		TS-DRP-DW-80-30	
Item		Specification	
		Uplink	Downlink
Frequency Range (MHz)	GSM/LTE FDD1800 Band	1710 ~ 1785	1805 ~ 1880
	WCDMA/LTE FDD2100 Band	1920 ~ 1980	2110 ~ 2170
Bandwidth(MHz)	GSM/LTE FDD1800 Band	0.2-20	
	WCDMA/LTE FDD2100 Band	0.2-20	
Sub band number	GSM/LTE FDD1800 Band	3	
	WCDMA/LTE FDD2100 Band	3	
Max. Total Output Power(dBm)Center Frequency		23±2	30±2
Max.Gain (dB) Center Frequency at 25?		80±3	80±3
ATT Adjustable Range (dB)/(Step) 1dB		0~30 @ 1 dB step	
ATT Adjustable Error (dB)		? ±1.5	? ±1.5

ALC (dB)		0~20
Noise Figure (dB) (Max. Gain)		? 8.0
Input VSWR(Power up, Min Gain, Pin=-30dBm)		? 1.8
Ripple In Band (P-P) (dB)At +25?	GSM/LTE FDD1800 Band	?±4.0@EBW
	WCDMA/LTE FDD2100 Band	?±4.0@EBW
Out of Band Rejection (dBc)At +25?	±1MHz offset	?-15
	±2MHz offset	?-30
	±5MHz offset	?-45
Spurious Emission (dBm) @ Out Of Band 10MHz Offset	9kHz~150kHz	? -36dBm/1KHz
	150kHz~30MHz	? -36dBm/10KHz
	30MHz~1GHz	? -36dBm/100KHz
	1GHz~12.75GHz	? -10dBm/1MHz
EVM (%)		? 8.0
Time Delay (us)		? 7.0
RF Connector		N(f)
Input / output Impedance (?)		50