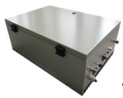


TS-LA-DW-37



TS-LA-DW-37



1800+2100 37dbm(5W)????

??: ????
On Order
 ★★★★★

[?????????](#)

??

Item		Specification	
		Downlink	Uplink
Frequency Range (MHz)	LTE 1800 Band	1805 ~ 1870	1710 ~1775
	LTE 2100 Band	2110 ~2170	1920 ~ 1980
Bandwidth(MHz)	LTE 1800 Band	65	65
	LTE 2100 Band	60	60
Max. Total Output Power (dBm)		37±2	-10±2
Gain (dB)		45±3	45±3
Max. Input Power With no damage (dBm)		10	-10
ATT Adjustable Range (dB)/(Step) 1dB		0~20 @ 1 dB step	
ATT Adjustable Error (dB)	1 ~ 10	? ±1.0	? ±1.0
	11 ~ 20	? ±1.0	? ±1.0
	21 ~ 30	? ±1.5	? ±1.5
ALC (dB)		0~20	
Noise Figure (dB) (Max. Gain)		/	? 7.0
Ripple In	LTE 1800 Band	? 7.0	

Band (P-P) (dB)At +25?	LTE 2100 Band	? 6.0	
Input / Output VSWR(Power up, Min Gain, Pin=-30dBm)		? 1.8	? 1.8
(Power up, Min. Gain, Pin=-30dBm) Time Delay (us)		? 5.0	? 5.0
EVM (%)		?6	
Spurious Emission (dBm)@ Out Of Band 2.5MHz Offset	LTE 1800 Band?	?	
		-36dBm/1kHz@9kHz~150kHz	
	LTE 2100 Band?	? -36dBm/10kHz@150kHz~30 MHz	
		? -36dBm/100kHz@30MHz~1 GHz	
		? -30dBm/1MHz@1GHz~12.75 GHz	
		? -36dBm/10kHz@150kHz~30 MHz	
		? -36dBm/100kHz@30MHz~1 GHz	
	? -30dBm/1MHz@1GHz~12.75 GHz		
RF Connector		N(f)	
Input / output Impedance (?)		50	
Power Supply		AC110/220V	
Power Consumption (Watts)		?150	
Temperature Range (?)		-5 ~ +45	
Humidity Range (%)		5~80	
Weight (Kg)		<35	
Dimension (mm)		450*303*156	
Monitor & Alarm		Local with USB? Remote with RJ45? remote with wireless modem	