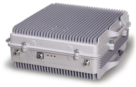


TSLA33A



TSLA33A



900MHz&2100MHz Dual Wide Band RF Repeater(33dbm)

??: ????
On Order
★★★★★

[?????????](#)

??

n ??????IP65?????????????

n ??????????????????

n ??????????????????????????

n ????????????????????? IP ? NMS????????????????????????????????

- n Aluminum-alloy casing with IP65 protection has high resistance to dust, water and corrosion
- n Low interference to BTS by adopting linear amplifier with high gain and low noise
- n Adopting filter with highly selectivity and low insertion loss eliminates interference between uplink and downlink
- n USB port provides a link to a notebook for local supervision or IP Based NMS(Network Management System) that can remotely supervise repeater's working status and download operational parameters to the repeater Via Ethernet