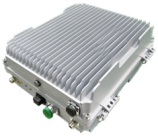


## TS-RP-500-80-37



TS-RP-500-80-37



480-512 MHz TETRA Band Selective BDA (37dBm)

??: ????  
**On Order**  
\*\*\*\*\*

[?????????](#)

??

?? (BTS)  
??

????????????? BTS  
???BTS  
???BTS?

The Band Selective BDA is designed to provide a more cost-effective solution than adding a new Base Transceiver Station (BTS) to improve signal coverage and communication quality in mobile system. And its easy installation and maintenance can help carrier get fast return.

The Band Selective BDA is working as a relay between the BTS and mobile terminals. It receives the low-power signal from BTS via the Donor Antenna, linearly amplifies the signal and then retransmits it via the Coverage Antenna to the weak/blind coverage area. And the radio network signal is also amplified and retransmitted to the BTS via the opposite direction.