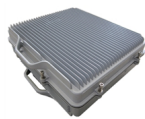


## JTD-DRP-GDW-90-37



JTD-DRP-GDW-90-37



LTE900+LTE1800+LTE/UMTS2100 Digital RF Repeater (37dBm)

??: ????  
1-2 months  
★ ★ ★ ★ ★

[?????????](#)

??

LTE<sup>900+</sup> LTE<sup>1800+</sup> LTE/UMTS<sup>2100</sup> ??????? (37dBm)

????????????????????SDR????????????01????????????????????????SDR  
???????????????????????????? SDR ???

LTE<sup>900+</sup> LTE<sup>1800+</sup> LTE/UMTS<sup>2100</sup> 3 Bands Digital RF Repeater<sup>r</sup> (37dBm)

Digital Repeater use the software defined radio (here we call SDR) technology to transfer the mobile signals into digital numbers of 0 and 1, so that the signals can be processed in the digital mode. Compared with analog repeaters, SDR not only is able to improve the cell enhancement performance, but also strengthen and add more functions to the repeaters. SDR enables the future networks to work on a single hardware platform, and realize the systems of different frequencies and more functions simply by software, which in a long run will make the system more flexible, easier and quicker to implement without cost increase.

- Ø ???/????
- Ø ????????
- Ø ??????

Ø ?????????????????????

Ø **Multi\_standards/Multi\_operator**

Ø **Remote control (Option)**

Ø **Bandwidth Programmable**

Ø **Multi-Band Selective**