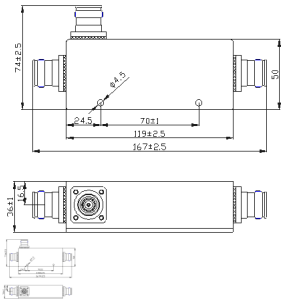


## TS-MCPE-MD7060B-X-155



TS-MCPE-MD7060B-X-155

Directional Coupler 698-6000MHz

??: ????  
1-4 Weeks

[?????????](#)

??

Electrical Specifications									
Frequency Range	698-6000MHz								
Coupling(dB)	5	6	7	8	10	13	15	20	30
Insertion Loss(dB)	2.4	2.0	1.5	1.4	1.1	0.8	0.4	0.3	≤0.3
Isolation(dB)	≥20	≥20	≥20	≥20	≥20	≥23	≥25	≥30	≥45
Coupling Deviation(dB)	±1.2	±1.2	±1.2	±1.2	±1.5	±1.5	±1.5	±1.5	±2
VSWR	≤1.3								
PIM3(dBc)	≤-155 (@2*43dBm)								
Connector	4.3-10-Female								
Power Rating(W)	200								
Impedance(Ω)	50								