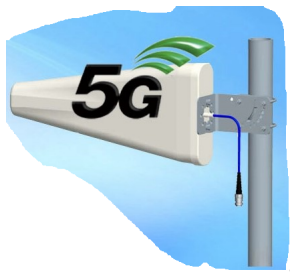


JTD-LPD-0660DSF-M



JTD-LPD-0660DSF-M



617~6000 MHz 5G Log Antenna(9dBi)

??: ????
1-4 Weeks
★★★★★

[??????????](#)

??

5G Logarithmic Periodic Directional Antenna

Specifications:

- Freq.Range(MHz): 617-960/1695-2700/3300-4200/4800-6000MHz
- Polarization: Vertical
- Gain (dBi): 7.5/9/9/8
- Ver. Beamwidth(*): 65/60/55/50
- Hor. Beamwidth(*): 100±15/85±15/80±15/70±15
- Intermodulation IM3 (2×43dBm carrier):-153dBc /-153dBc/ -153dBc /NA
- VSWR: ≤1.8
- F/B Ratio: 15/20/18/18
- Connector: N Female or 4.3-10 Female
- Dimension(mm): 442*210*65